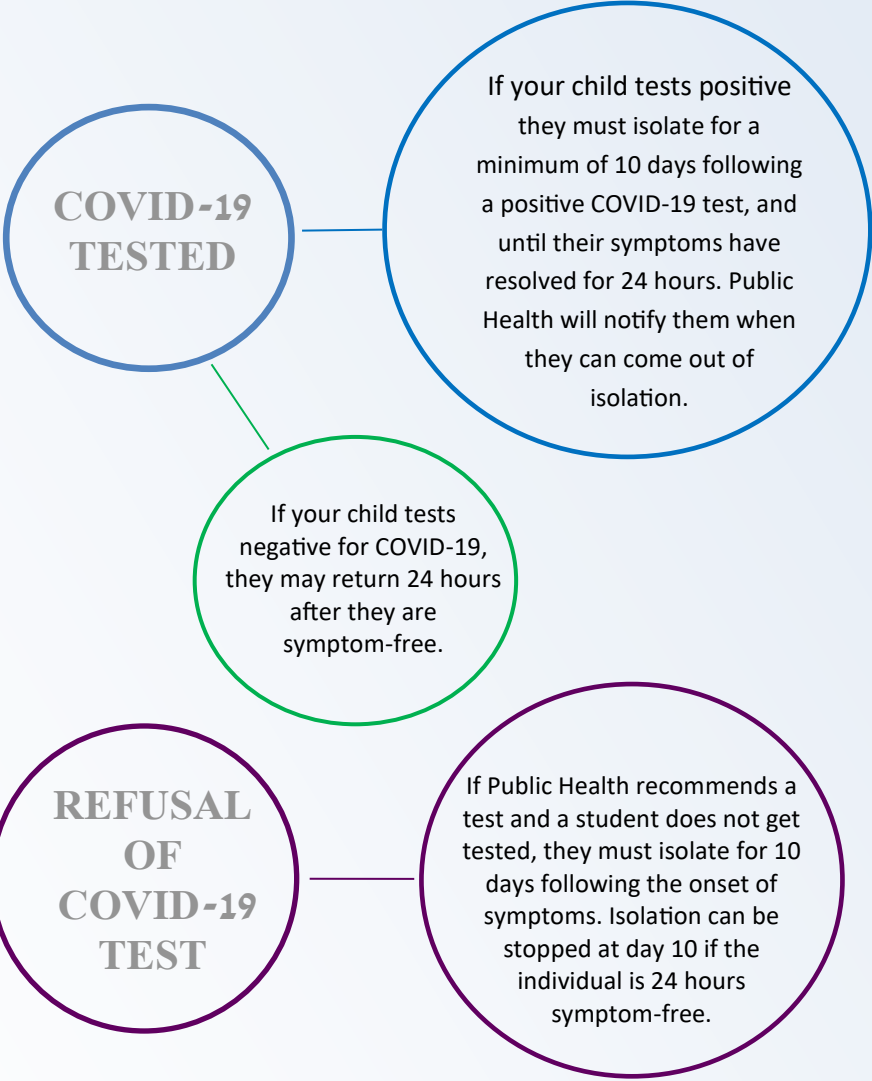


# When Can a Sick Child Return to School?



Students / families should call Health Links at 204-788-8200 or 1-888-315-9257 if they notice symptoms. If Health Links says that no test is required, students may return 24 hours after being symptom-free. When Health Links direct students to get a test, families must confirm with the school that they have been tested and state the result of the test.



## RESPONSE LEVELS ORANGE AND RED UPDATE

**What if a member of the same household displays COVID-19 symptoms when the school division is in Response Levels Orange or Red.**

If anyone in the household is symptomatic, the entire household needs to self-isolate. Therefore, students must now stay home if they have a symptomatic member of their household.

If any member of a household has symptoms of the illness and has been tested, the entire household must self-isolate, pending results of a COVID-19 test.

If a student displays symptoms during the day, they will need to go home and all other siblings in K-12 will need to go home as well. This includes siblings who attend other schools in the Division.

If a member of the household becomes symptomatic during the day while at home, it is recommended that parents / guardians pick up other household members who are students at school.

If a household member has travelled to a restricted area (outside of Manitoba) students may still attend school if they are asymptomatic.

If a member of the household tests positive or has been exposed to a confirmed case of COVID-19, the entire household needs to self-isolate for a 14-day period.

**Close contacts (updated provincial health order March 1)**  
A close contact is anyone who has been in close physical proximity (less than two metres or six feet) for more than a cumulative total of ten minutes to a confirmed COVID-19 case over the course of a day. All household members are now considered close contacts.

If public health officials identify a variant of concern (VOC) in a case with school exposures, more aggressive measures for contacts will be implemented by public health officials.

It is recommended that close contacts go for testing 10 days after their last exposure to the case.

Regardless of whether the close contact tests negative, they must complete their 14 days of self-isolation (quarantine); however, household members of the close contact can end their self-isolation (quarantine) when the close contact tests negative, as long as the test has been done a minimum of 7 days after the exposure. If a close contact does not get tested for COVID-19, and the positive case is not a VOC, the household members of that person must isolate until the close contact completes the full 14 days of self-isolation (quarantine) and remains asymptomatic.

If the close contact is linked to a VOC case and the close contact chooses not to be tested, the close contact must self-isolate for 14 days, followed by an additional 10 days, for a total of 24 days. The rest of the household must also self-isolate for the entire 24 days.